

DOUBLE CERAMIC IRONS ARE AVAILABLE  
IN THE FOLLOWING SIZES:

### Curling Irons

**1 in. (25mm)**  
Model CD701GNC

**1¼ in. (32mm)**  
Model CD702GNC

## IMPORTANT

Never leave your appliance on and unattended. However, should you fail to turn the curling iron off, it will shut itself off automatically within 60 minutes at 60 Hz, 72 minutes at 50 Hz.

## USER MAINTENANCE

Your curling iron is virtually maintenance free. No lubrication is needed. If cleaning becomes necessary, disconnect the curling iron from the power source, allow it to cool and wipe exterior with a cloth. If any abnormal condition occurs, unplug the curling iron, allow it to cool and return it for repair to an authorized service center only. No repairs should be attempted by the consumer.

## CAUTION

NEVER allow the power supply cord to be pulled or twisted. Never wrap the cord around the curling iron. Damage will occur at the high flex point of entry into the curling iron, causing it to rupture and short circuit. Inspect the cord frequently for damage. Stop use immediately if damage is visible or if unit stops or operates intermittently.

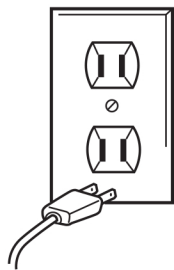
## STORAGE

When not in use, your appliance should be disconnected, allowed to cool and stored in a safe, dry location, out of reach of children. Do not jerk or strain cord at plug connections. Do not wrap the line cord around the appliance. Allow the cord to hang or lie loose and straight at the point of entry into the appliance.

**WARNING: The instant-heat barrel will get very hot within a few seconds and should not come into contact with skin after the curling iron is turned on.** When the high setting is chosen, the curling iron will have an extremely hot barrel. Always do a test curl before using the iron to ensure the proper setting for your hair type.

**WARNING:  
IF YOU THINK  
THE POWER IS OFF  
WHEN THE SWITCH  
IS OFF,  
YOU'RE WRONG.**

**KEEP AWAY FROM WATER**



Everyone knows that electricity and water are a dangerous combination. But did you know that an electric appliance is still electrically live even if the switch is off? If the plug is in, the power is on. So when you are not using your appliances, keep them unplugged.

**ALWAYS UNPLUG  
SMALL APPLIANCES**

## IMPORTANT SAFETY INSTRUCTIONS

When using electrical appliances, especially when children are present, basic safety precautions should always be taken, including the following:

### READ ALL INSTRUCTIONS BEFORE USING

### KEEP AWAY FROM WATER

## DANGER —

Any appliance is electrically live even when the switch is off. To reduce the risk of death or injury by electric shock:

1. Always unplug appliance immediately after use.
2. Do not use while bathing or in the shower.
3. Do not place or store appliance where it can fall or be pulled into a tub or sink.
4. Do not place in, or drop into water or other liquids.
5. If an appliance falls into water, unplug it immediately. Do not reach into the water.

**WARNING —** To reduce the risk of burns, electrocution, fire, or injury to persons:

1. This appliance should never be left unattended when plugged in.
2. Do not pull, twist, or wrap line cord around appliance.

3. Close supervision is necessary when this appliance is used by, on, or near children or individuals with certain disabilities.
4. Use this appliance only for its intended use as described in this manual. Do not use attachments not recommended by the manufacturer.
5. Never operate this appliance if it has a damaged cord or plug, if it is not working properly, or if it has been dropped or damaged, or dropped into water. Return the appliance to an authorized service center for examination and repair.

6. Keep the cord away from heated surfaces.
7. Never use while sleeping.
8. Never drop or insert any object into any opening or hose.
9. Do not use outdoors or operate where aerosol (spray) products are being used or where oxygen is being administered.
10. Unit is hot when in use. Do not let heated surfaces touch eyes or skin.
11. Do not place the heated unit directly on any surface while it is hot or plugged in. Use built-in counter rest.
12. Never block the air openings of the appliance or place it on a soft surface, such as a bed or couch, where the air openings may be blocked. Keep the air openings free of hair, lint and other debris.
13. Do not use an extension cord to operate appliance.

14. Do not touch hot surfaces of the appliance. Use handles or knobs.
15. Do not attempt to touch the housing of your appliance near the barrel, as it is hot when in use.
16. Do not use with a voltage converter.
17. Before plugging in, read the information about dual voltage contained in the Operating Instructions section of this manual.
18. This appliance is not a toy. Keep away from children.

## SAVE THESE INSTRUCTIONS OPERATING INSTRUCTIONS

Use on Alternating Current (50/60 hertz) only. This unit is designed to be operated at 125/250V AC.

This appliance has a polarized plug (one blade is wider than the other). As a safety feature, this plug will fit in a polarized outlet only one way. If the plug does not fit fully in the outlet, reverse the plug. If it still does not fit, contact a qualified electrician. Do not attempt to defeat this safety feature.

**NOTE: DO NOT USE THIS STYLING APPLIANCE ON HAIR EXTENSIONS.**

## DUAL VOLTAGE

This curling appliance will automatically adjust to the proper voltage. Use an adapter plug with correct configuration prior to use in outlet.

## STYLING WITH DOUBLE CERAMIC TECHNOLOGY CURLING IRONS

The barrel of your new curling iron has an Easy-Glide™ double ceramic-coated surface, the newest technology.

This double ceramic-coated surface helps to smooth down flyaways. As you wind each strand around the barrel, it evenly distributes heat so that the style you create has a salon-perfect, silky smooth, shiny finish. Hair glides easily over the surface of the barrel. Any residue from styling products that builds up on the ceramic-coated barrel can be easily cleaned.

## LIMITED TWO-YEAR WARRANTY (U.S. AND CANADA ONLY)

Conair will repair or replace (at our option) your unit free of charge for 24 months from the date of purchase if the appliance is defective in workmanship or materials.

To obtain service under this warranty, return the defective product to the service center listed on back, together with your purchase receipt and \$7.50 for postage and handling. In the absence of a purchase receipt, the warranty period shall be 24 months from the date of manufacture.

**ANY IMPLIED WARRANTIES, OBLIGATIONS, OR LIABILITIES, INCLUDING BUT NOT LIMITED TO THE IMPLIED WARRANTY OF MERCHANTABILITY AND FITNESS FOR A PARTICULAR PURPOSE, SHALL BE LIMITED IN DURATION TO THE 24-MONTH DURATION OF THIS WRITTEN, LIMITED WARRANTY.**

**IN NO EVENT SHALL CONAIR BE LIABLE FOR ANY SPECIAL, INCIDENTAL, OR CONSEQUENTIAL DAMAGES FOR BREACH OF THIS OR ANY OTHER WARRANTY, EXPRESS OR IMPLIED, WHATSOEVER.**

This warranty gives you specific legal rights, and you may also have other rights, which vary from province to province.

## USING INSTANT HEAT, THE 30 VARIABLE TEMPERATURE SETTINGS & UNIFORM HEAT RECOVERY SYSTEM

This curling iron features Conair's Instant Heat technology. Within this Instant Heat technology there are 30 variable temperature settings. There is a temperature range that is gentle and safe for every type of hair, from the finest to the curliest and most resistant, and helps you create the look you want. You can vary the iron's temperature according to your particular need!

### Temperature Setting Guide

Temp. Control	Hair Type
Low 1–5	Fragile/Fine, Hair
Medium 6–10	Thin Hair
Med/High 11–15	Medium/Normal Hair
High 16–20	Wavy/Curly Hair
Maximum 21–30	Coarse/Thick Hair
Turbo Heat®	Up to 15°C/27°F burst of heat for difficult styling spots

Conair's professional salon standards of engineering provide you with a Uniform Heat Recovery System that maintains the iron at constant temperatures.

There is a constant surge of power to ensure that heat is continuously delivered for optimal styling results, unlike other units, which lose heat during use. This provides consistent styling power so that every strand of your hair is set with the same level of heat and comes out the same way for a perfect finish.

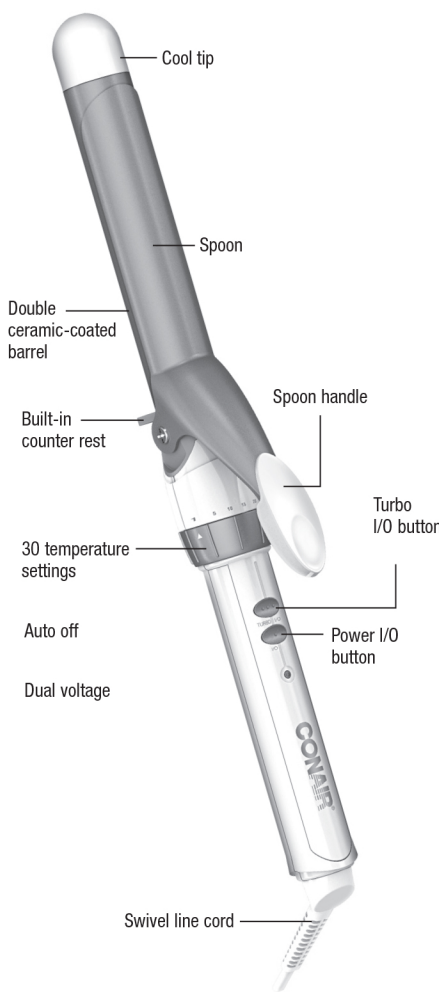
## GETTING STARTED

Plug the curling iron cord into any electrical outlet (125/250V). Press Power I/O button. The unit will heat up very quickly. Red light will blink until it reaches desired temperature setting and then becomes solid.

To activate Turbo Heat®, press Turbo I/O button and green light will go on, increasing curling iron temperatures up to 15°C/27°F. Press Turbo I/O button again to turn off Turbo Heat®. The green light will turn red. To turn unit off, press Power I/O button again until red light goes out.

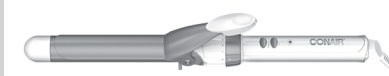
**WARNING: The curling iron's barrel will get very hot within a few seconds and should not be placed in contact with the skin after the curling iron has been turned on.**

## GET TO KNOW YOUR CURLING IRON



## DOUBLE CERAMIC

### 1 - 1¼ IN. CURLING IRONS



### Have a Question?

*Please do not return this product to the retailer.*

### Call Us First!

Our customer service and product experts are ready to answer ALL your questions.

Please call our TOLL-FREE customer service number at:  
**1-855-926-6247**  
or visit us online at  
[www.conaircanada.ca](http://www.conaircanada.ca)

### Instructions & Styling Guide

For your safety and continued enjoyment of this product, always read the instruction book carefully before using.

# CONAIR®

### Instructions & Styling Guide

Models CD701GNC/CD702GNC

## TO CURL HAIR

Hair should be clean and completely dry before using the curling iron. Section hair evenly, and comb each section before winding. For best results, use a light styling product before blow-drying hair.

1. Start curling with a hair section that is 1 inch wide and no more than ½ inch thick. Open the spoon and place curling iron midway up the hair section then spread hair evenly between spoon and barrel. Gently slide the curling iron down to hair ends. To avoid crimped ends, make sure they are securely wound under the spoon in the direction of the desired curl. Remember, always place the spoon above the hair strand when making a curl you want rolled under; place the spoon under the hair strand when creating a flip style.
2. Wind the hair up as far as you want it curled, being careful not to let the iron touch the scalp. Hold 8–12 seconds, depending on the length and texture of your hair. For tighter, bouncier curls, roll less hair. For looser, free-flowing curls, roll more hair. Repeat process on additional sections of hair until you achieve the hairstyle you desire.
3. To remove the curling iron, unwind the hair and press the handle and allow curl to slide out. To set curl, do not comb or brush curls until cool.
4. To achieve faster styling results, press the Turbo I/O button. The Turbo Heat® function will deliver more heat for maximum styling performance.

Swivel line cord

IB-16189

19CN034281

www.conaircanada.ca

1-855-926-6247  
©2019 Conair Consumer Products ULC

**SERVICE CENTRE:**  
Conair Consumer Products ULC  
100 Conair Parkway,  
Woodbridge, Ontario, L4H 0L2

Consumer Call Centre E-mail:  
Consumer\_Canada@Conair.com

Printed in China